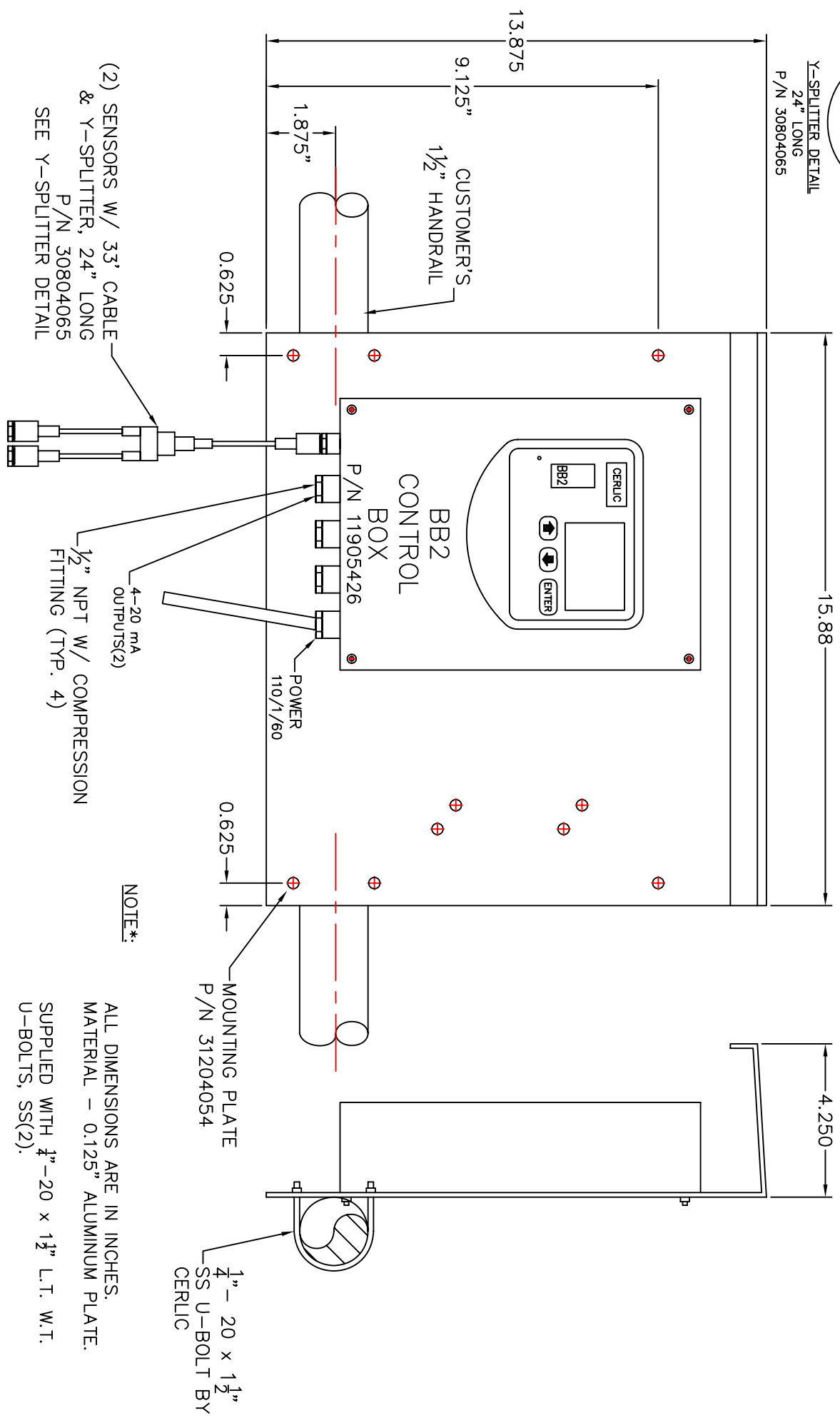


Y-SPLITTER DETAIL
24" LONG
P/N 30804065



(2) SENSORS W/ 33' CABLE
& Y-SPLITTER, 24" LONG
P/N 30804065
SEE Y-SPLITTER DETAIL

4-20 mA
OUTPUTS(2)
1/2" NPT W/ COMPRESSION
FITTING (TYP. 4)

NOTE*:

ALL DIMENSIONS ARE IN INCHES.
MATERIAL - 0.125" ALUMINUM PLATE.
SUPPLIED WITH 4" - 20 x 1 1/2" L.T. W.T.
U-BOLTS, SS(2).



Cerlic Environmental Controls, Inc
P.O. Box 420097
Atlanta, GA 30342
Phone (404) 256-3097
Fax (404) 256-3094

BB2 CONTROL BOX &
MOUNTING PLATE

DRAWING NUMBER
104A

LAST REV. DATE
08/13/05

SCALE
1/4

NO.	LT	DATE	BY	DESCRIPTION
1	1			
2	2	02/23/03	JR	
3	3			
4	4			
5	5			
6	6			
7	7			