



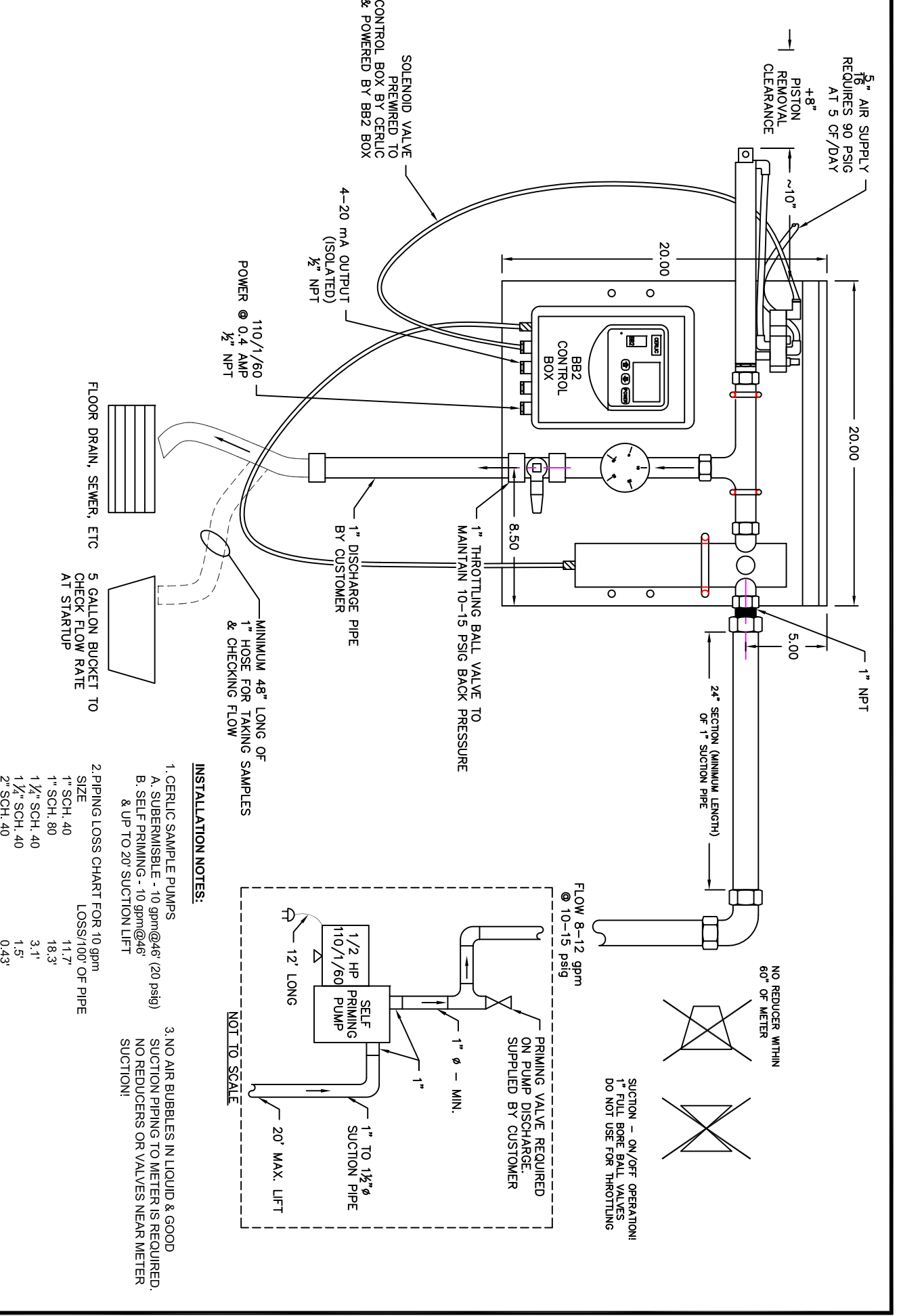
Cerlic Environmental Controls, Inc

P.O. Box 420097
 Atlanta, GA 30342
 Phone (404) 256-3097
 Fax (404) 256-3094

PIPING INSTALLATION DETAILS
 REUSE/EFFLUENT METER
 CTX20/25LC

DRAWING NUMBER 146
 LAST REV. DATE 10/07/08
 SCALE 1/8

REV.	DATE	DESCRIPTION	INT. DATE
1	02/25/09	JLT	
2			
3		JR	
4			
5			
6			
7			

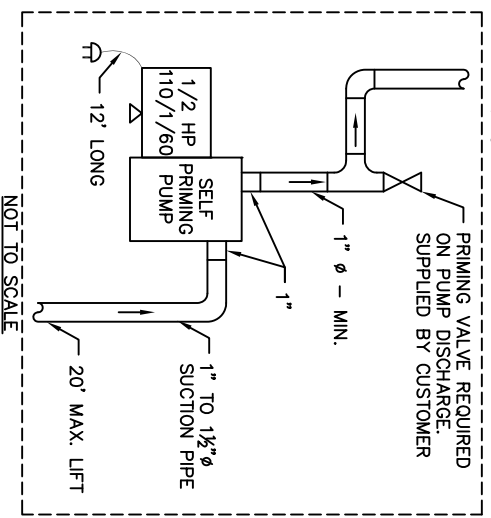


INSTALLATION NOTES:

- CERLIC SAMPLE PUMPS
 A. SUBERMISSIBLE - 10 gpm@46" (20 psig)
 B. SELF PRIMING - 10 gpm@46" & UP TO 20' SUCTION LIFT
- NO AIR BUBBLES IN LIQUID & GOOD SUCTION PIPING TO METER IS REQUIRED. NO REDUCERS OR VALVES NEAR METER SUCTION!

2. PIPING LOSS CHART FOR 10 gpm
 LOSS/100' OF PIPE

SIZE	LOSS/100'
1" SCH. 40	11.7'
1" SCH. 80	18.3'
1 1/2" SCH. 40	3.1'
1 1/4" SCH. 40	1.5'
2" SCH. 40	0.43'



SUCTION - ON/OFF OPERATION!
 1" FULL BORE BALL VALVES DO NOT USE FOR THROTTLING

NO REDUCER WITHIN 60" OF METER

FLOW 8-12 gpm @ 10-15 psig