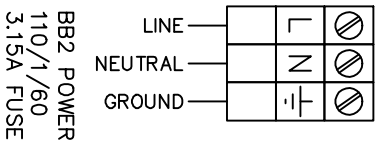
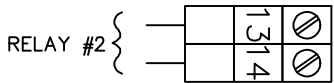
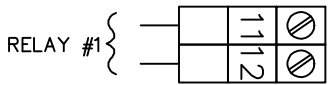
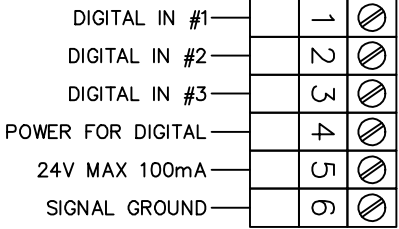
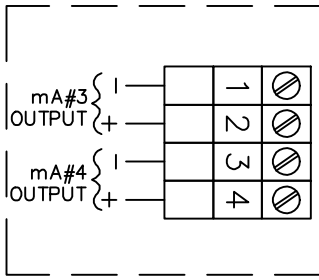
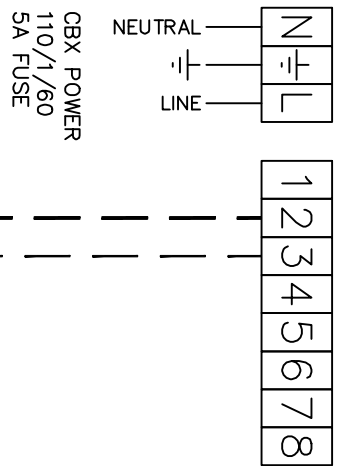


# BB1 WIRING DIAGRAM

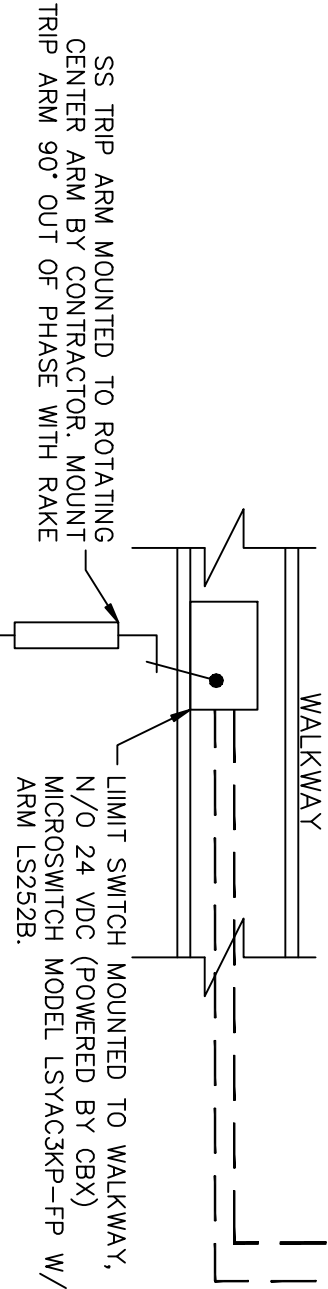
4-20 mA EXPANSION BOARD P/N 11905782



# CBX WIRING DIAGRAM



RAKE LIMIT SWITCH N/O  
24 VDC FROM CBX  
CONNECT WHITE &  
BLACK WIRES TO  
TERMINALS 2&3  
ON CBX REF. DWG 141A



LIMIT SWITCH MOUNTED TO WALKWAY,  
N/O 24 VDC (POWERED BY CBX)  
MICROSWITCH MODEL LSYAC3KP-FP W/  
ARM LS252B.

Cerlic Environmental Controls, Inc



P.O. Box 420097  
Atlanta, GA 30342  
Phone (404) 256-3097  
Fax (404) 256-3094

WIRING - CBX,  
BB1 & LIMIT SWITCH

DRAWING NUMBER  
151

LAST REV. DATE  
01/13/12

SCALE  
NTS

NO.	DATE	BY	CHKD.	DESCRIPTION
1		JR		ISSUED
2		JR		REVISED
3		JR		REVISED
4		JR		REVISED
5		JR		REVISED
6		JR		REVISED
7		JR		REVISED