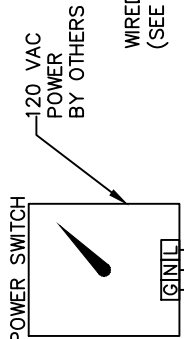
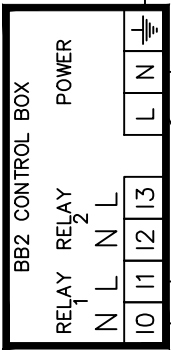
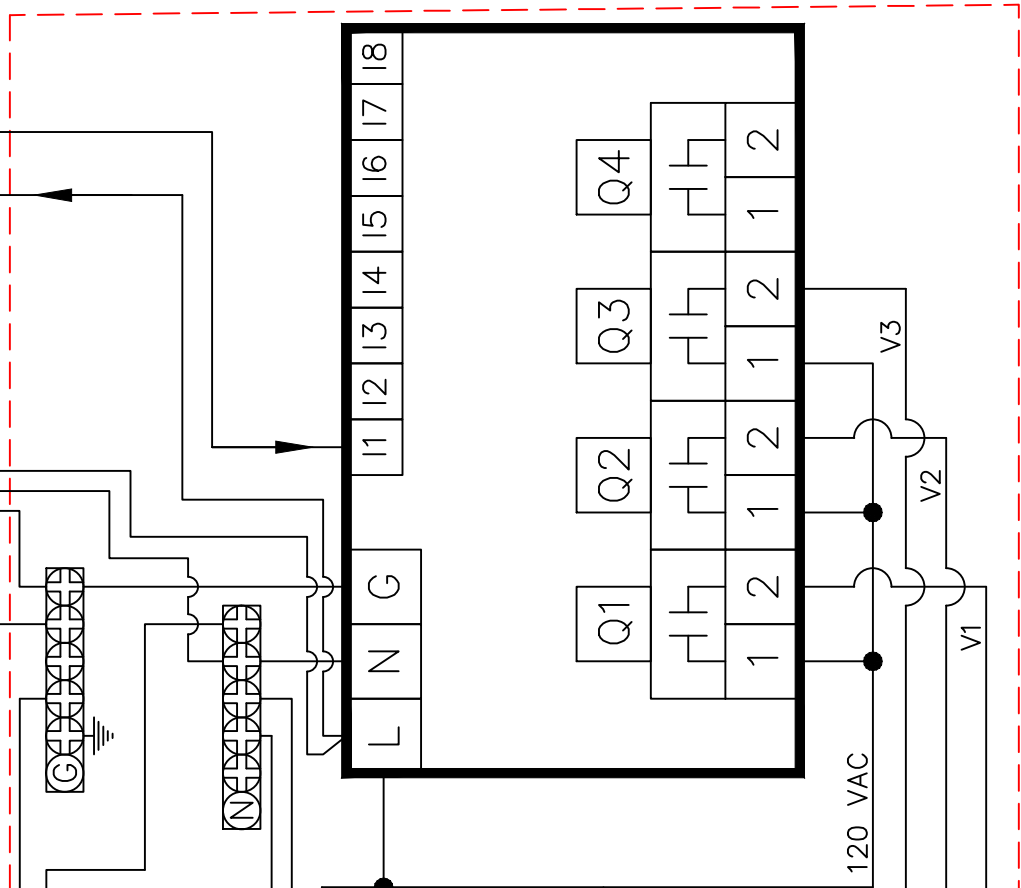


NOTES:

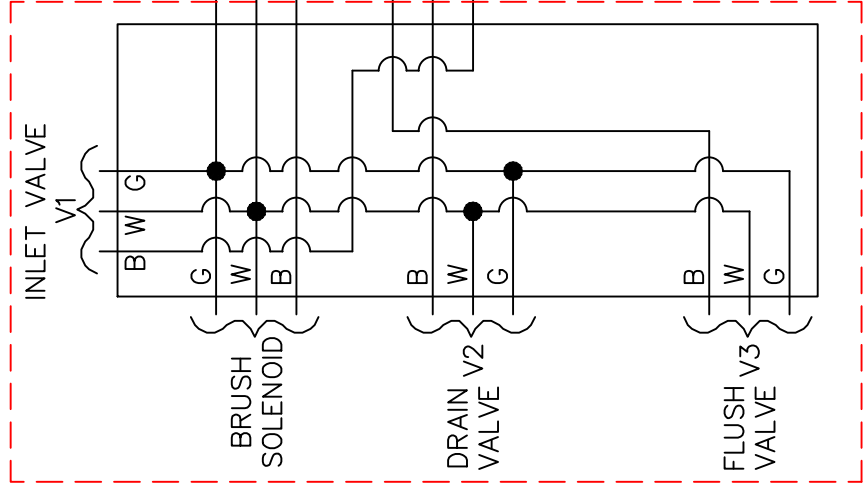
- * - PUMP POWER MUST BE SAME PHASE AS POWER TO PLC & BB2.
- FACTORY TO PREWIRE POWER TO BB2 FROM PLC & RUN RELAY 1 TO PLC.



5 WIRE CABLE PREWIRED FROM BB2 TO PLC BY CERLIC



PLC BOX - REFERENCE DWG 155



VALVE JUNCTION BOX REFERENCE DWG 156

CONTACT NOTE:
 N.O. CONTACT TO CLOSE WHILE CENTRIFUGE FEED PUMP (OR CENTRIFUGE) IS RUNNING. WHEN CENTRIFUGE FEED PUMP STOPS THEN CONTACT IS OPENED CAUSING CERLIC PLC TO GO THRU FLUSH CLEANING CYCLE. AT END OF CLEANING CYCLE ALL VALVES WILL STAY CLOSED UNTIL CENTRIFUGE FEED PUMP IS STARTED WHICH CAUSES CONTACT TO CLOSE.

POWER FOR CONTACT - OBTAIN POWER FROM L TERMINAL ON PLC SO POWER IS THE SAME PHASE AS POWER INTO PLC. CONTACT AND WIRING SUPPLIED BY OTHERS

JLT DRAWN BY 08/20/03		JR CHECKED BY	
WIRING DIAGRAM-CENTRATE BB2, PLC, VALVE JUNCTION BOX, & ON/OFF SWITCH		SCALE	APPROVED BY
DRAWING NUMBER	LAST REV. DATE	1/31/14	NTS
137B	1/31/14	NTS	

Cerlic Environmental Controls, Inc
 P.O. Box 420097
 Atlanta, GA 30342
 Phone (404) 256-3097
 Fax (404) 256-3094

